

## 1. Kit Includes



ezRAID

FireWire800 Cable

A-to-B type  
USB 2.0 Cable

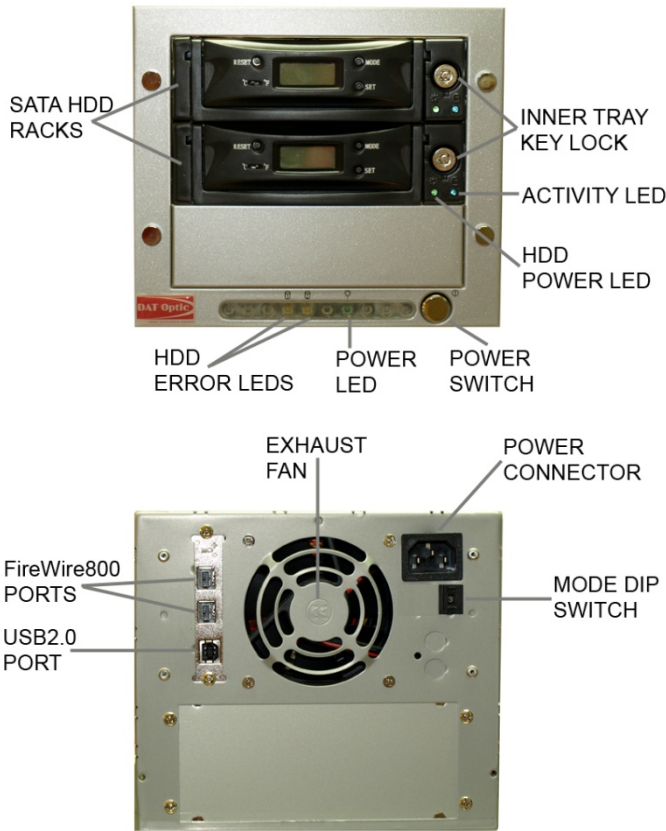
Keys

Screws

Power Cord

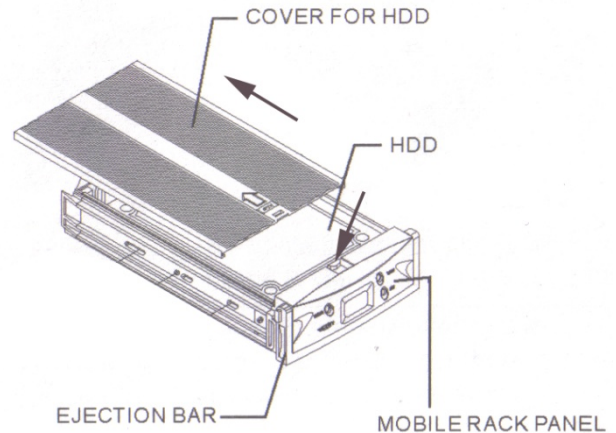
User's Manual

## 2. Overview

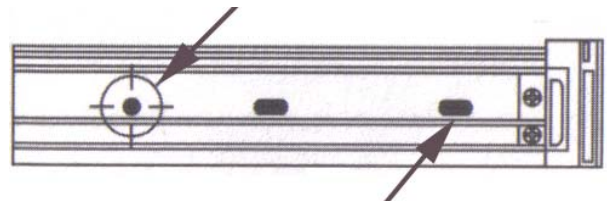


## 4. Hard Drive Installations

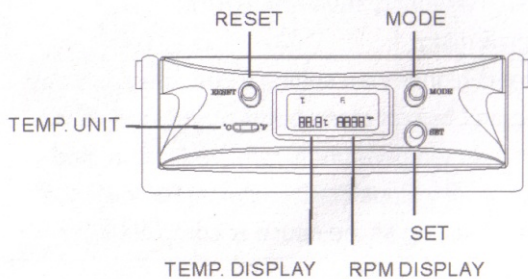
1. Remove the S-Trays from the ezRAID by pulling up the eject bar.
2. Press down the cover clip and slide out the cover.



3. Install hard drives with the included screws.



## 3. LEDs and Buttons



1. Slide the S-Trays back into the ezRAID and push the latch down to secure the SATA hard drives.
2. Connect FireWire800/USB2.0 cable to the FireWire800/USB2.0 connector on the back of the ezRAID. Connect the other end of the FireWire800/USB2.0 cable to the FireWire800/USB2.0 host controller.

## 5. Hard Drive Setup

1. Configure your RAID level on the back of the ezRAID by changing the ID on the Dip switch. Use a pointed tip such as a pen to push the "+" or "-" to change the mode.

**ID = 0 Mirror - RAID 1 (safe mode)**

**ID = 1 Span**

**ID = 2 Stripe - RAID 0 (fast mode)**

**ID = 3 Dual Drive**

**Note:** ezRAID must be rebooted to change modes.

2. Once the mode is changed, power ON and Connect the FireWire cable or USB from the back of the ezRAID to FireWire or USB port on the computer.

### For Mac user:

Please use Disk Utility to Initialize the hard drive when detected in OS.

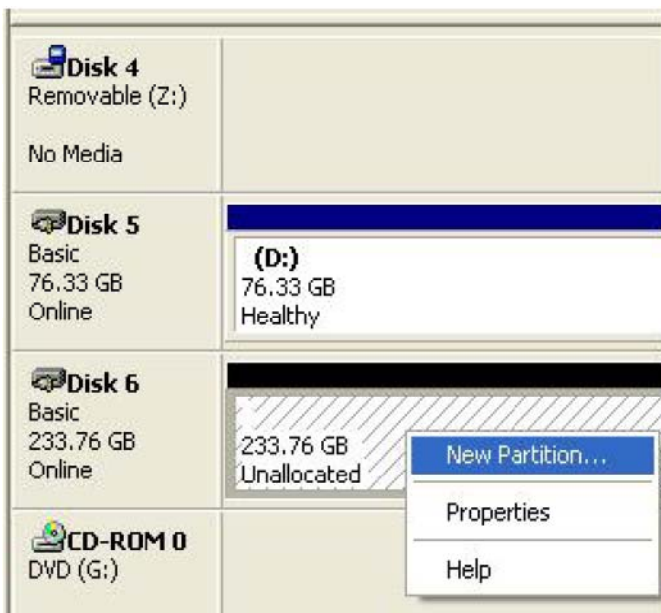
### For Windows user:

Open Disk management and format your ezRAID.

Right click on "My Computer" → Select "Manage" → "Disk management"



Initial and format ezRAID HDD.



### Advance feature:

Change the hard drive tray's fan and temperature settings.

1) Push **MODE** button for two (2) seconds, system will enter setting condition.

2) Adjust the setting value by press the **SET** button.

ezRAID can monitor TWO set of fan speed and temperature at the same time.

The setting will shift as below by the "Mode" button

T1 → F1 → T2 → F2

**Note:** Variation of temp is 5 C and Fan Speed is 1000RPM

### Alarm ON:

If there is an even that ezRAID detecting Fan Speed is under setting value or Temperature is higher than setting value. ezRAID LCD will flash and Buzzer will sound. If the problem is solved, then ezRAID will resume the normal operation, otherwise the alarm signal will sound 30 second and then go to silent mode, however the digits on LCD keeps flashing until the cause is resolved.

### LED indications:

Green Power ON, normal operation condition

Blue LED 1 and 2: SATA Hard Drive is being access

Yellow LED 1 and 2: Error with that particular hard drive / channel

### RAID 0 or Dual drive

Yellow LED on – HDD missing or failed

### RAID 1 – Mirror

Blue LED blinking and Yellow on – RAID mirror being sync or rebuilt

### Note:

1. When ezRAID is rebuilding the image, it is highly recommended to disconnect from computer. This will speed up the rebuilt process.

2. ezRAID will use the hard drive which has the latest timestamp to be the MASTER drive in the rebuilding process.